

KARMA





<b>CONSTRUCTION</b>	Level Cut Loop
<b>PILE FIBER COMPOSITION</b>	100% Nylon
<b>YARN TYPE</b>	Coiler
<b>DYE METHOD</b>	Solution Dyed
<b>PILE WEIGHT</b>	1500 g/m <sup>2</sup>
<b>TOTAL WEIGHT</b>	2500 g/m <sup>2</sup>
<b>NUMBER OF TUFTS</b>	236400/m <sup>2</sup>
<b>TUFTING GAUGE</b>	1/10"
<b>PRIMARY BACKING</b>	Woven
<b>SECONDARY BACKING</b>	Action Fleece or Action Back (Optional)
<b>CARPET WIDTH</b>	3.66 or 4.00 m
<b>PILE HEIGHT</b>	8.00 mm
<b>TOTAL HEIGHT</b>	10.00 mm

# SPECIFICATIONS

# COLOURLINE



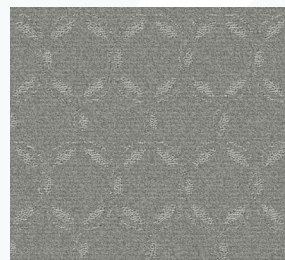
KARMA-12433



KARMA-12455



KARMA-12700



KARMA-12711



KARMA-12722



KARMA-12755



KARMA-12799



KARMA-12966